



ISO 14001:2004 CERTIFIED
Certificate No. : AJA05/8912

Supersonic Multi-product Sales Incorporated

Company Profile & Products

CAD / CAM Designing, CNC Machining, Plastic Injection & Blowing
Tel. 2926641/2927015 Email: SMPSI2004@yahoo.com

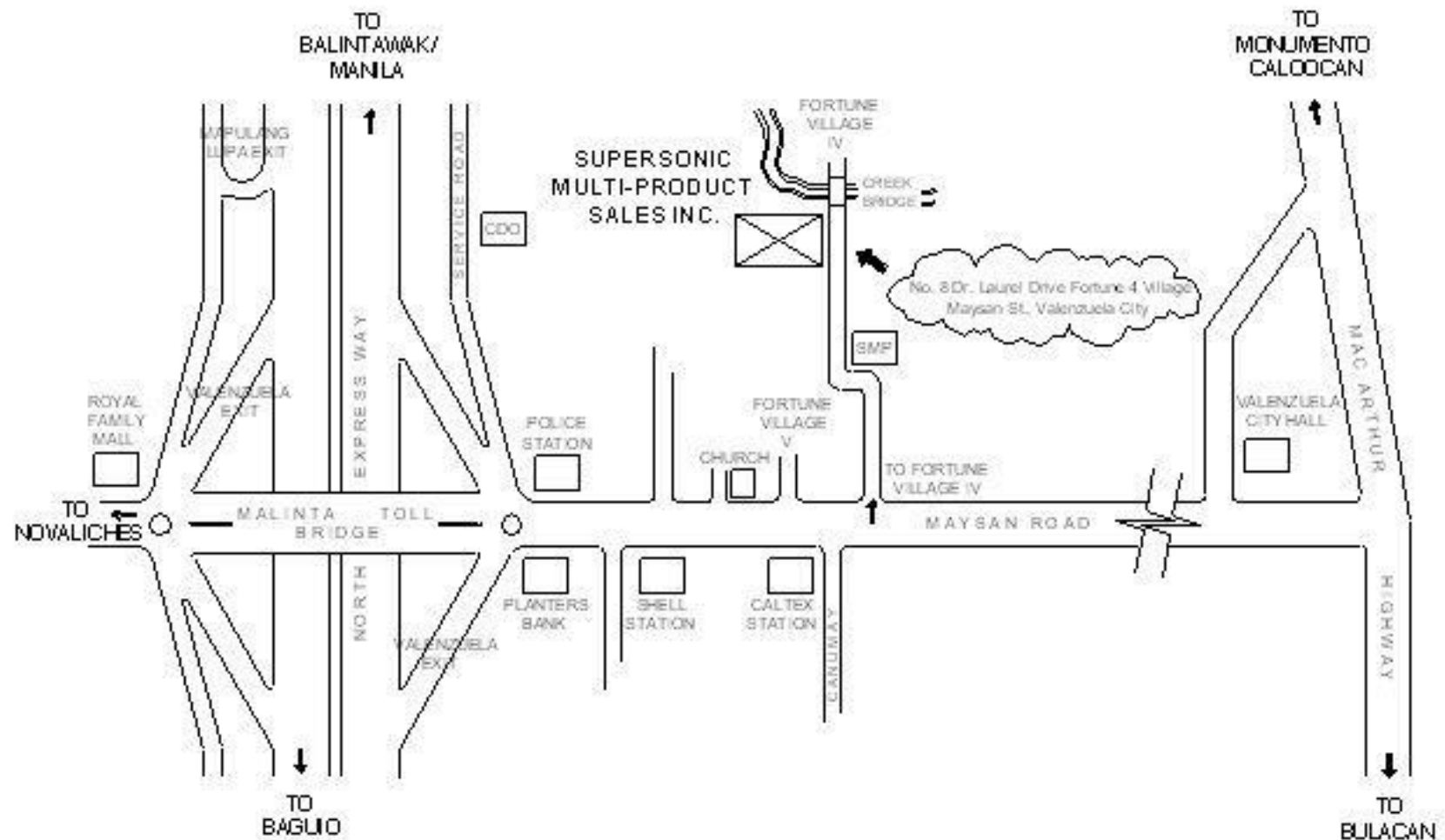


2

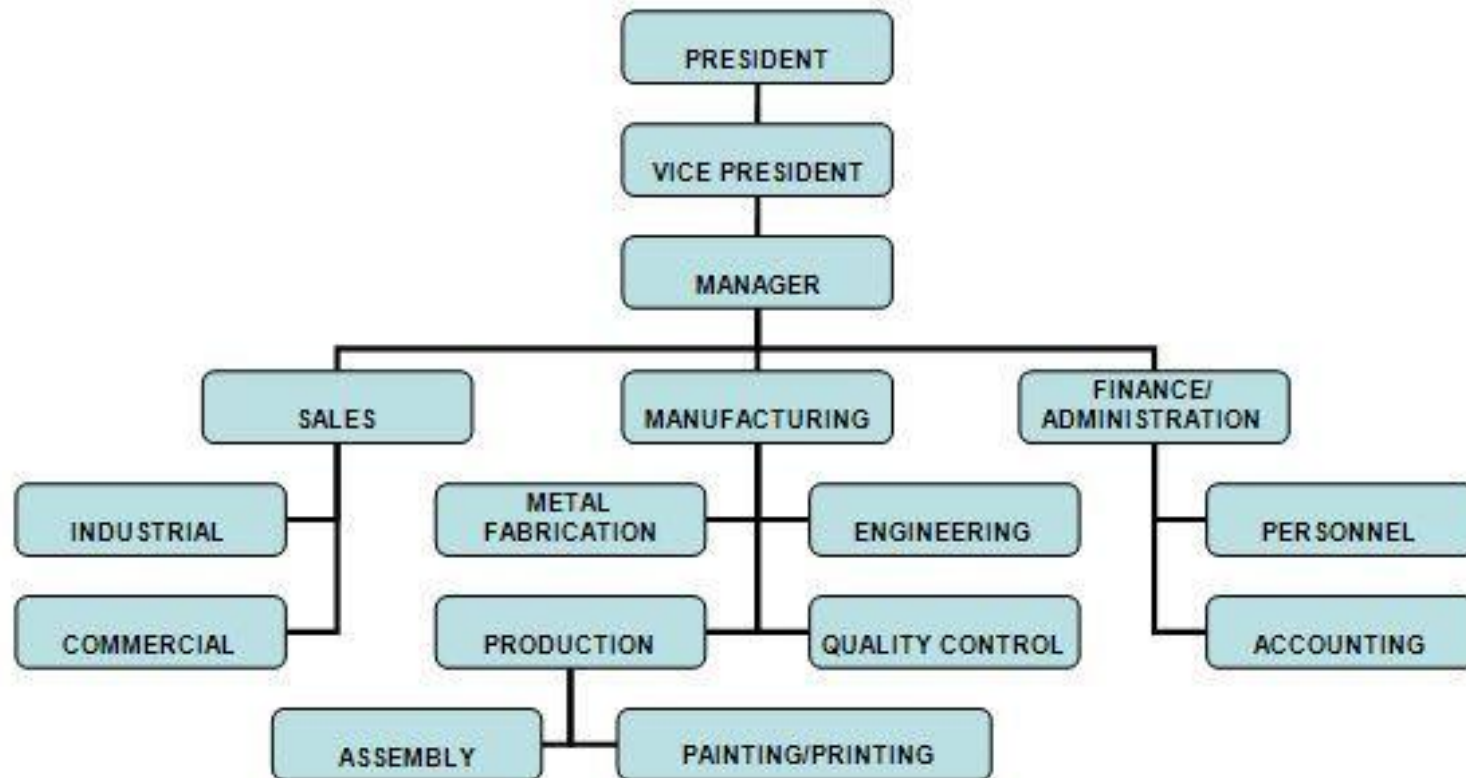
COMPANY

PROFILE

VICINITY MAP



ORGANIZATIONAL CHART



CORPORATE MISSION:

To produce high quality goods at the lowest possible costs
To enhance the skills of our personnel through continuous training
To provide more job opportunities through diversification of our products

COMPANY NAME: Supersonic Multi-Product Sales Incorporated

ADDRESS: No.8 Dr. M. Laurel Drive Fortune Village Gate IV Maysan, Valenzuela City

TELEPHONE NOS.: 2926641 / 2927015; Bayantel 4443519

TELEFAX NO.: 2929474

DATE ESTABLISHED: August 1969

LAND AREA: 10,000 Sq. Meters

PLANT AREA: 2,600 Sq. Meters

NATURE OF BUSINESS: Manufacturing Plastic and Metal Parts

PRINCIPAL OFFICERS: A. D. Gomez, Lucy Gomez, John Ericson Go, Lou Anthony Go

CONTACT PERSON: A. D. Gomez, Leo Abracia, Greg Reyes

MANPOWER = 138

1. INDIRECT = 22

- A) DESIGN
- B) STAFF (PLANNING/PERSONNEL)
- C) MOULD FABRICATION
- D) SUPERVISION

2. DIRECT = 116

PRODUCTION OPERATION

- 1. PLASTIC INJECTION = 3 SHIFT AND BLOW MOLDING
- 2. METAL PRESS FABRICATION = REGULAR SHIFT
- 3. MOULD FABRICATION = REGULAR SHIFT

MAJOR SERVICES:

PLASTIC INJECTIONS AND BLOW MOULDING FOR INDUSTRIAL & COMMERCIAL PARTS

A) INDUSTRIAL PARTS

- 1) APPLIANCES
- 2) MOTORCYCLES
- 3) AUTOMOTIVE PARTS
- 4) INDUSTRIAL BATTERY CASE
- 5) WATER METER
- 6) INDUSTRIAL PERIMETER LIGHTS

B) COMMERCIAL PRODUCTS

- 1) SAFETY GADGETS FOR CONSTRUCTION
- 2) AGRICULTURAL/LIVESTOCK ITEMS
- 3) HOUSEHOLD ITEMS

MAJOR CUSTOMERS:

1. APPLIANCES

- A) MATSUSHITA ELECTRIC (PANASONIC)
- B) DAIKIN ALLEN
- C) PHILLIPS

2. CARS

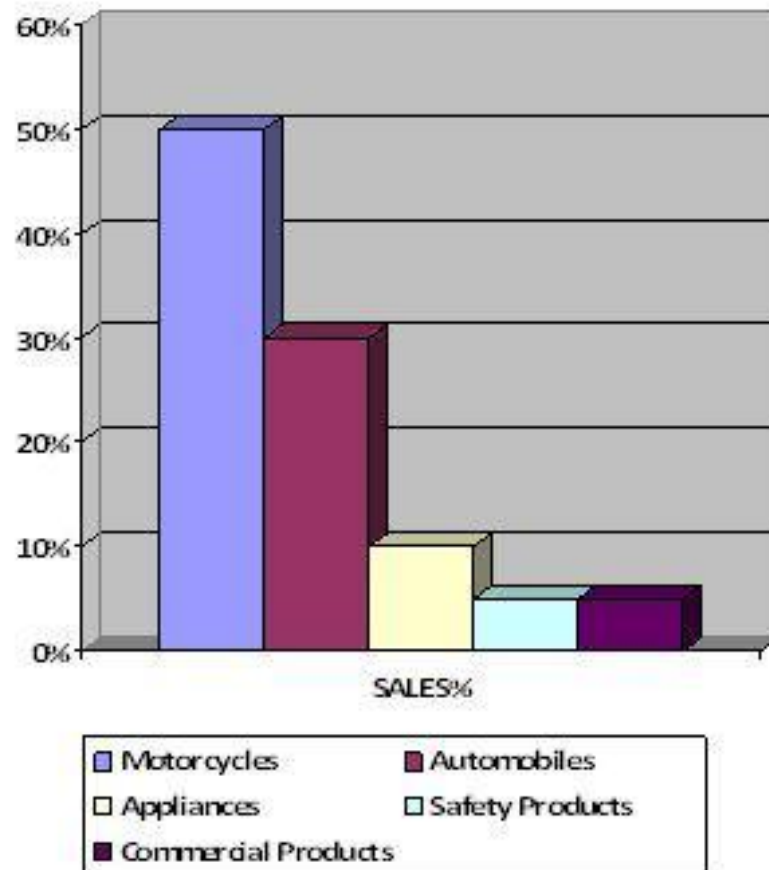
- A) HONDA CARS PHILIPPINES INC.
- B) MITSUBISHI MOTORS PHILIPPINES
- C) TOYOTA MOTORS PHILIPPINES
- D) NISSAN MOTORS

3. MOTORCYCLES

- A) KAWASAKI MOTORS PHILIPPINES
- B) SUZUKI MOTORS PHILIPPINES

4. OTHERS

- A) PEOPLES
- B) LIBERTY MANUFACTURING
- C) VALERIE
- D) SIEMENS



MATERIAL USAGE:

ENGINEERING PLASTICS

Material Name	Symbol	Chemical Name
Nylon (6)(66)	PA	Polyamide
Acetal	POM	Polyacetal
ABS		Acrylonitrile Butadene Styrene
EVA		Ethylene Vinylacetate
AS		Acrylonitrile Styrene
Acrylic	PMMA	Polyethyl Methacrylate
Polycarbonate		
Acetate		

APPLICATIONS: Car Parts, Motorcycle Parts, Appliance Parts, Engineering and Industrial Parts, Medical Items

GENERAL PURPOSE PLASTICS

Material Name	Symbol	Chemical Name
Polypropelene	PP	Polypropelene
Polyethylene HD	PEHD	Polypropelene
Polyethylene LD	PELD	Polypropelene
Hi-Impact	HIP	
Medium Impact	HIPS	
Polysterene	GPPS	Polysterene Styrol

APPLICATIONS: Commercial Items, Toys, Crates, Oil Tanks, Reserve Tanks, (For Blow Molding) Gallon Containers, Caps, and others

RAW MATERIAL SOURCING

DOMESTIC SUPPLIERS:

1. S-IK COLOR PHILIPPINES
2. EL BUEN ASENSO Y CIA INCORPORATED
3. TRANSWORLD TRADING
4. FAR EAST POLYMER
5. LEGASPI IMPORT AND EXPORT
6. POLYSTERENE MANUFACTURING CORPORATION
7. F.I.C. MARKETING
8. FUMC TRADING
9. BONA SCENTIO CORPORATION
10. TRANS METRO
11. CHEMREZ
12. CYCLE MASS

TECHNICAL CAPABILITIES:

1. **PLASTIC INJECTION AND BLOW MOLD DESIGN**
2. **MOLD AND DIE FABRICATION**
3. **SECOND PROCESS TECHNOLOGY**
 - A) PAINTING
 - B) PRINTING (SILK SCREENING)
 - C) HOT STAMPING
 - D) SUBASSEMBLY OF PARTS AS REQUIRED
4. **MOLD FINISH DESIGN (SAND BLASTING)**

MACHINE AND EQUIPMENT AVAILABILITY



PLASTIC INJECTION MACHINE

UNIT	MACHINE NAME	CAPACITY
1	KAWAGUCHI	70 Tons
4	KAWAGUCHI	100 Tons
1	KAWAGUCHI	110 Tons
3	KAWAGUCHI	150 Tons
1	KAWAGUCHI	240 Tons
1	KAWAGUCHI	330 Tons
1	KAWAGUCHI	480 Tons
2	NIKKO	100 Tons
1	NIKKO	140 Tons
1	MITSUBISHI	550 Tons
1	MITSUBISHI	850 Tons
1	JSW	100 Tons
1	JSW	220 Tons
1	HAITAI	160 Tons
1	SHUANGMA	160 Tons
1	SHUANGMA	320 Tons
1	FUCHUN SHIN	180 Tons

10

COMPANY

PROFILE

1
1
1

FUCHUN SHIN
FUCHUN SHIN
YIZUMI

220 Tons
320 Tons
1100 Tons

BLOW MOLD MACHINE

UNITS

1
1
2

MACHINE

OSK BLOWING
OSK BLOWING
OSK BLOWING

CAPACITY

1/2 Liter
1 Liter
5 Gallon

GRINDING MACHINE

UNITS

2
1
2
1

MACHINE

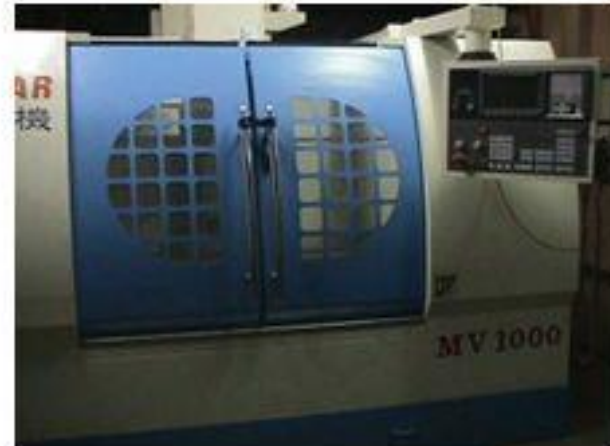
GRINDER
GRINDER
GRINDER
GRINDER

CAPACITY

75 KGS
100 KGS
300 KGS
600 KGS

MOLD FABRICATION EQUIPMENT

MACHINE NAME	UNIT
CNC MILLING MACHINE	3
EDM MACHINE	3
VERTICAL MILLING MACHINE	9
VC4000 VERTICAL MILLING MACHINE	1
LATHE MACHINE	4
SANDBLASTING MACHINE	2
UNIVERSAL TOOL GRINDER	1
COMPLEX DRILLING MACHINE	2
ELECTRIC DRILLING MACHINE	4
Y-TYPE DRILLING MACHINE	1
RADIAL DRILLING MACHINE	1
COPY MILLING MACHINE	1
SURFACE GRINDING MACHINE	1
POWER SAW	1
LAPPING MACHINE	1
PANTHOGRAPH	1

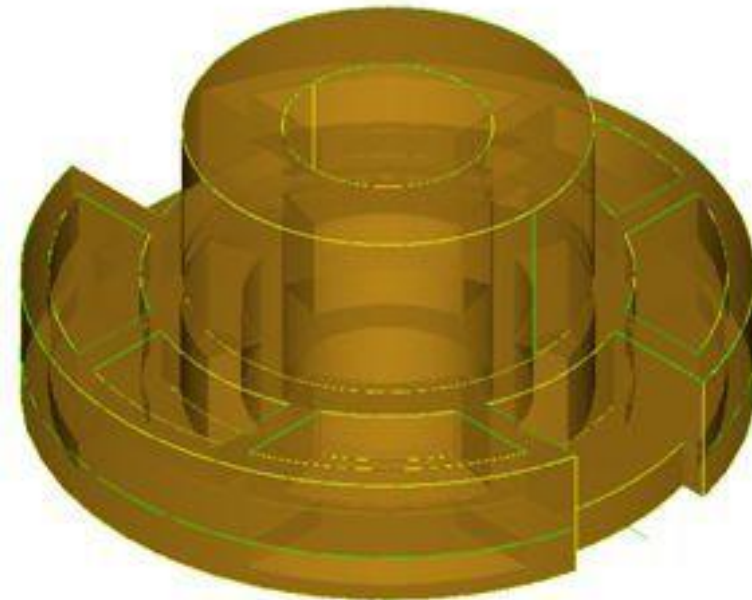


COMPUTER NUMERICAL CONTROLLED

CAD / CAM

MASTERCAM is used to design a part and produce the code required to machine it on a Computer Numerical Control (CNC) machine. MASTERCAM is a computer-aided design / manufacturing (CAD/CAM) software. Designers, engineers, and machinists worldwide use it for 2D and 3D mechanical design, surface modeling, solid modeling, reverse engineering, prototyping, mold-making, pattern-making, and production machining.

MASTERCAM makes easy CNC programming of 2-5 axis mills, lathes, wire EDM, laser, plasma and water-jet machines a reality. Shops across the globe rely on MASTERCAM to give them a competitive edge to turn around more parts and perform more complex jobs than ever before.



**MODEL PRODUCT SAMPLE:
FREE STOP BUSH_ELECTRIC FAN**

METAL FABRICATION EQUIPMENT

UNIT	MACHINE TYPE	CAPACITY
1	GEAR HOBBER	-
1	POWER PRESS MACHINE	20 Tons
2	POWER PRESS MACHINE	30 Tons
2	POWER PRESS MACHINE	60 Tons
1	HYDRAULIC PRESS	200 Tons
1	HYDRAULIC PRESS	150 Tons
1	PRESS / BENDER	4ft Length
1	COMBINATION MACHINE	B - 8ft S - 8ft
2	SPOT WELDING MACHINE	-
1	SPOT WELDING MACHINE	-
1	GRINDING MACHINE	50HP



SPRAY PAINTING FACILITIES & EQUIPMENT

UNIT	MACHINE TYPE	BRAND
3	SPRAY GUN	IWATA / MEIJI
1	PNEUMATIC PAINT MIXER (80 PSI)	TAIWAN
1	CONVEYORIZED OVEN	-
1	AIR COMPRESSOR (220 PSI)	TOSHIBA
1	REFRIGERATED AIR DRYER	IWATA
2	2-STAGE AIR FILTER	JUCAI
1	WATER CURTAIN PAINTING BOOTH	-



WATER CURTAIN PAINTING BOOTH



CONVEYORIZED OVEN

NO POWER INTERRUPTIONS

STANDBY GENERATOR

UNIT	NAME	CAPACITY	ORIGIN
2	DENYO	750KVA	JAPAN





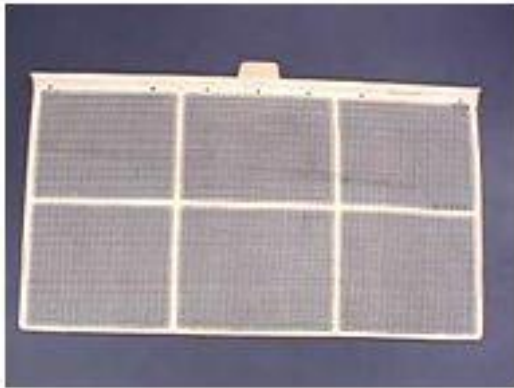
BASIN



AUTO TUBE FEEDER



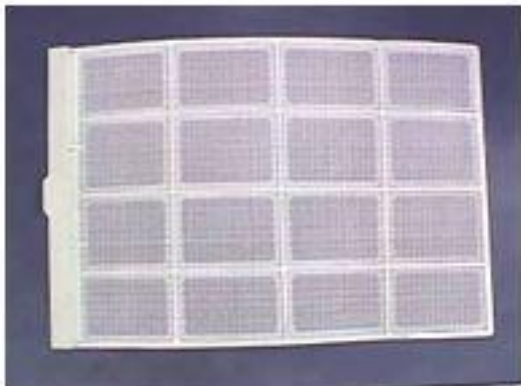
PIGLET MAT



AIR FILTER BIG



AIR FILTER (S)



AIR FILTER (S)



DRAIN PAN (S; B)



KNOB (S; B)



FRONT PANEL (K350)



FRONT PANEL CHASSIS



FRONT CABINET



FRONT CONSOLE



MUD GUARD (LH)



MUD GUARD



PEDAL ASSEMBLY



Fan Blade



Frame



Switch Panel & Guard Mark



Lower



Rear Guard



Lower



Lens & Base



Street Lamp (AVESCO)



REAR FENDER
(KE MODEL)



REAR FENDER
(HD)



FRONT FENDER
(KE)



FRONT FENDER
(KE)



COWLING ASSEMBLY
(NEW MODEL)



BATTERY CASE
(BARAKO)



WINKER LENS
(TMX: RS100)



GRIP PIPE ASSEMBLY
(BARAKO)



COVER FRAME
(RH; LH)



COVER FRAME



OIL TANK
(B-120)



CHAIN CASE



SIDE COVER
(BARAKO)



CHAIN GUIDE; GRIP PIPE
(GP; B-120)



SIDE COVER
(KC 140)



OIL TANK
(X3; X4)



COWLING BODY (KMX MODEL)



COWLING BODY (KMX MODEL)



SIDE COVERS (SCOOTER)



COVER PANEL (SCOOTER)



COVER UNDER (SCOOTER)



COVER HORN (FURY)



COVER LEG STEPTHROUGH (FURY)



SIDE SKIRT COVERS (FURY)



FRONT / REAR FENDER (FURY)



COVER HEADLAMP / TANK (FURY)



28

SAMPLE PRODUCTS

REFRIGERATOR



29

SAMPLE PRODUCTS

SAFETY GADGETS



Sub-Woofer Deco



Feed Port Filter



Filter Unit



Overflow Hose B



Overflow Filter Cover



Bearing Case



Overflow Hose A, B, Short, Long



Switch Cover